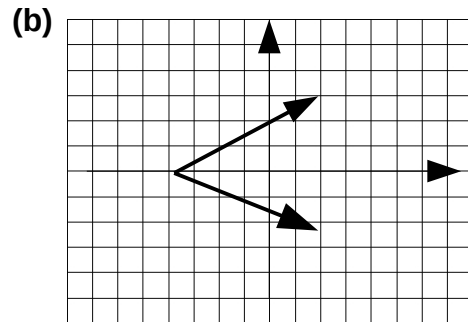
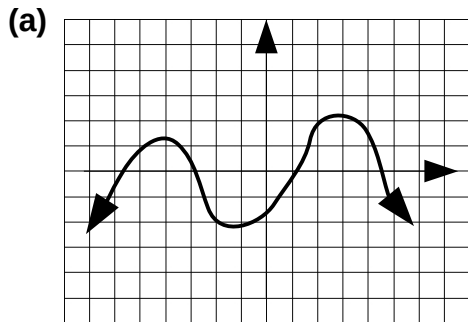


Quiz 3
(Sections 1.2, 1.3)

Name: _____

1. Use vertical line test to determine whether the given graph defines a function



2. Given the graph of a function $f(x)$:

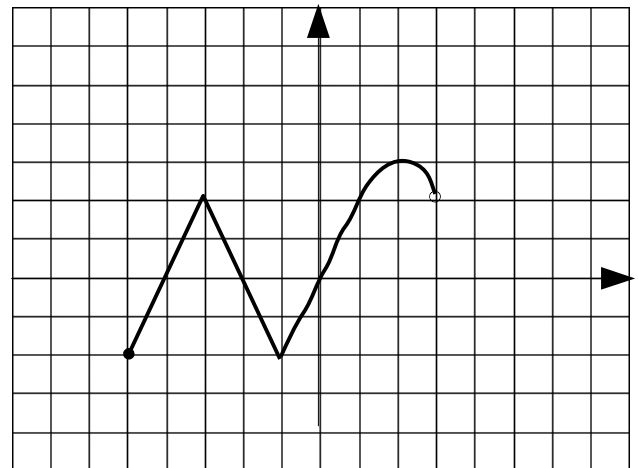
(a) Find $f(0)$ and $f(-3)$.

$f(0) =$ _____ , $f(-3) =$ _____

(b) identify x- and y-intercepts:

x-intercept(s):

y-intercept(s):



(c) determine the *domain* and the *range* of function f :

Domain:

Range:

(d) find relative *maxima* and *minima* of $f(x)$.

3. Determine whether the given *function is odd, even, constant or neither*.

(a) $g(x) = x^5$

(b) $h(x) = x^4$

(c) $t(x) = x^3 + x^2$