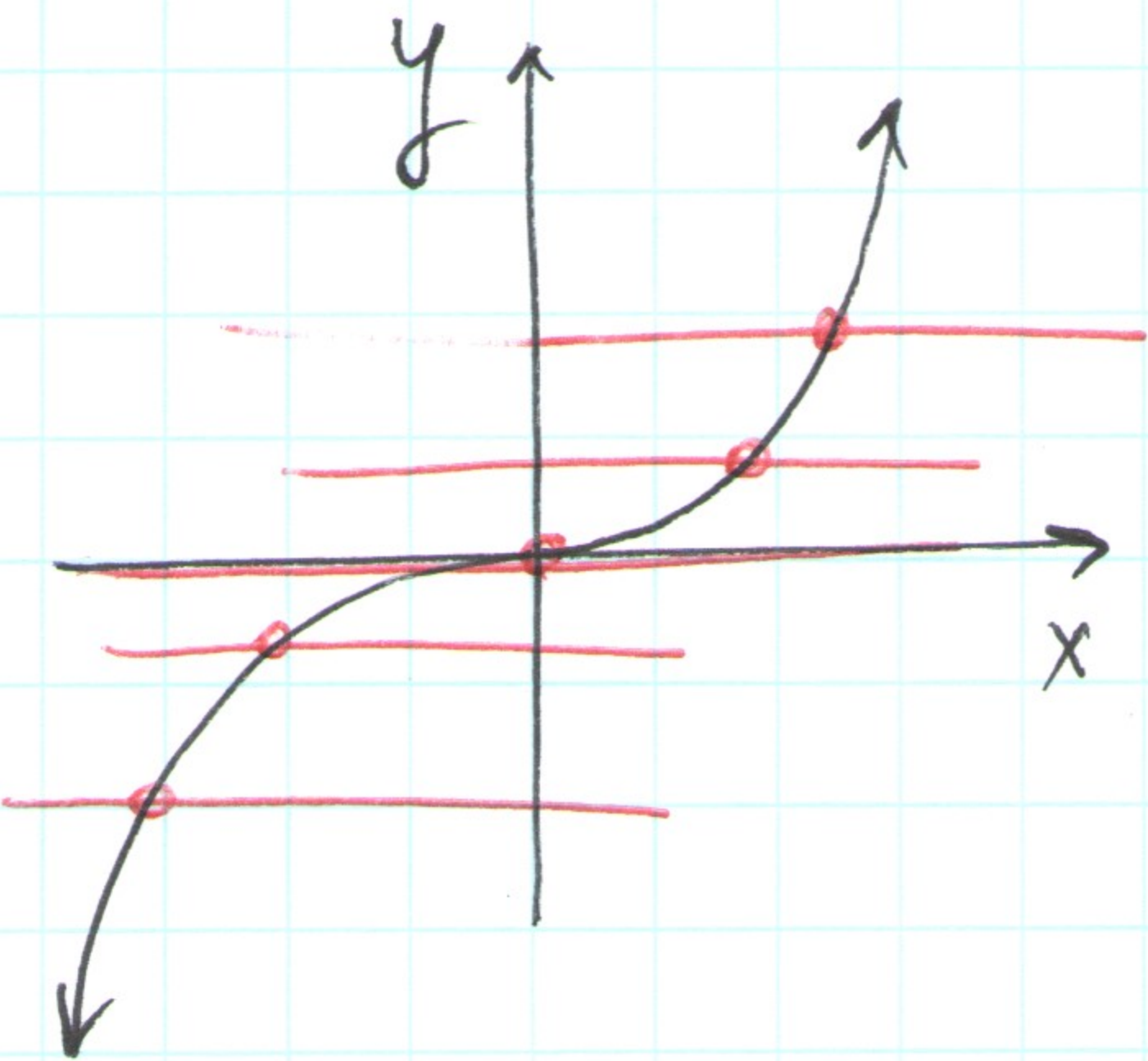
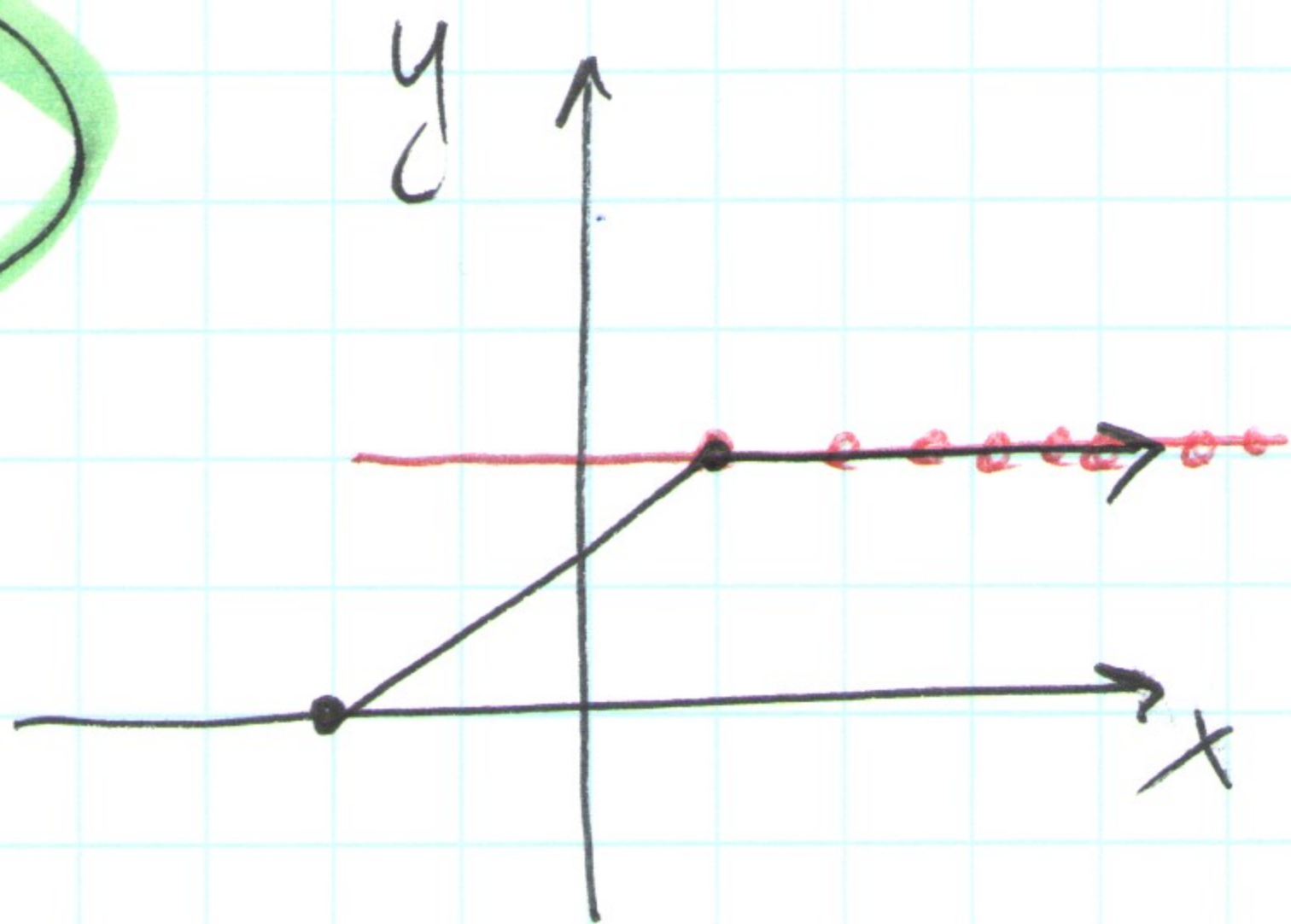


#30



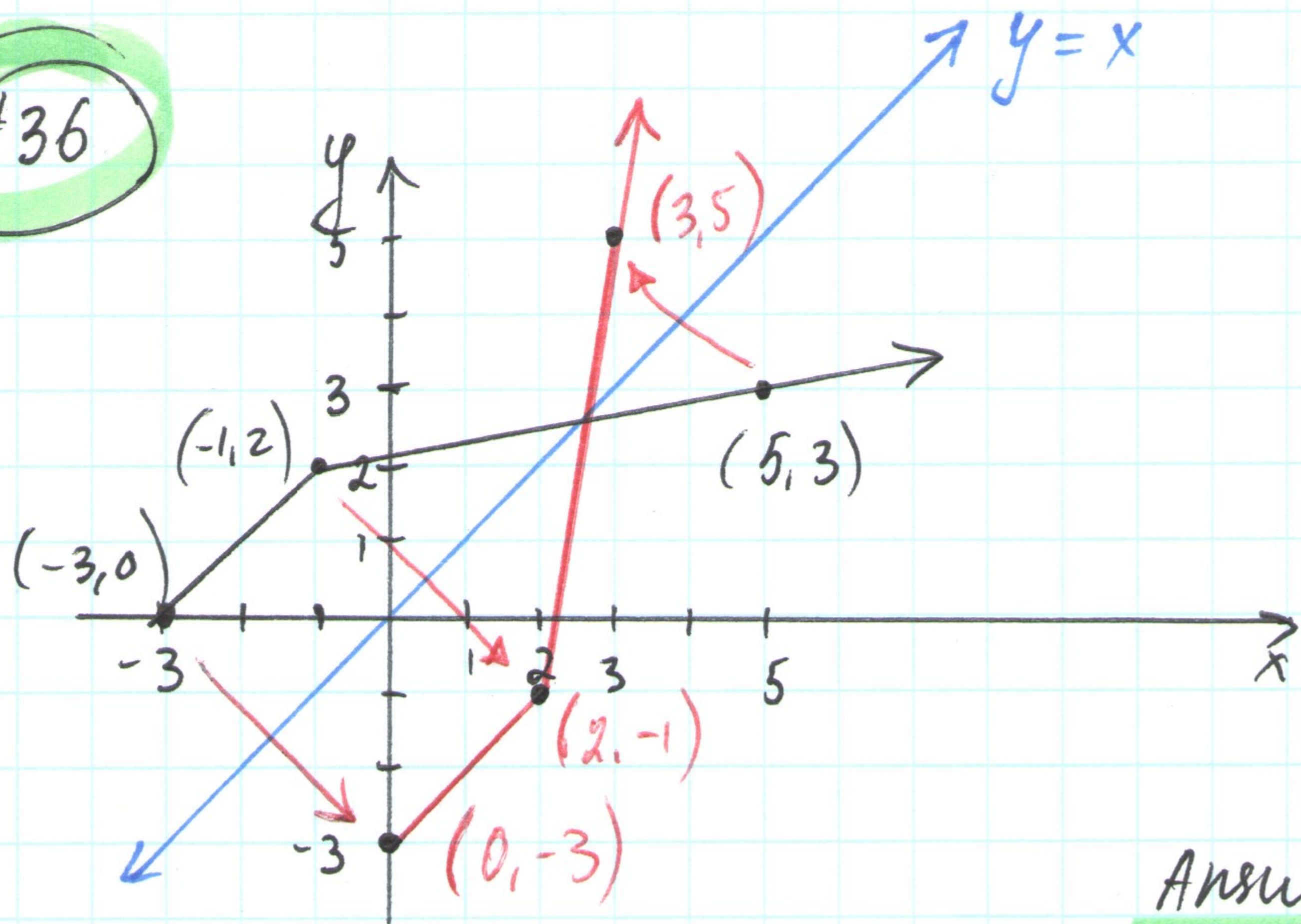
represents a function that has inverse function (does not fail horizontal line test)

#32



does not represent a function that has inverse function (fails the horizontal line test)

#36



$f(x)$	$f^{-1}(x)$
point $(5,3)$	$\rightarrow (3,5)$
point $(-1,2)$	$\rightarrow (2,-1)$
point $(-3,0)$	$\rightarrow (0,-3)$

Answer: graph with