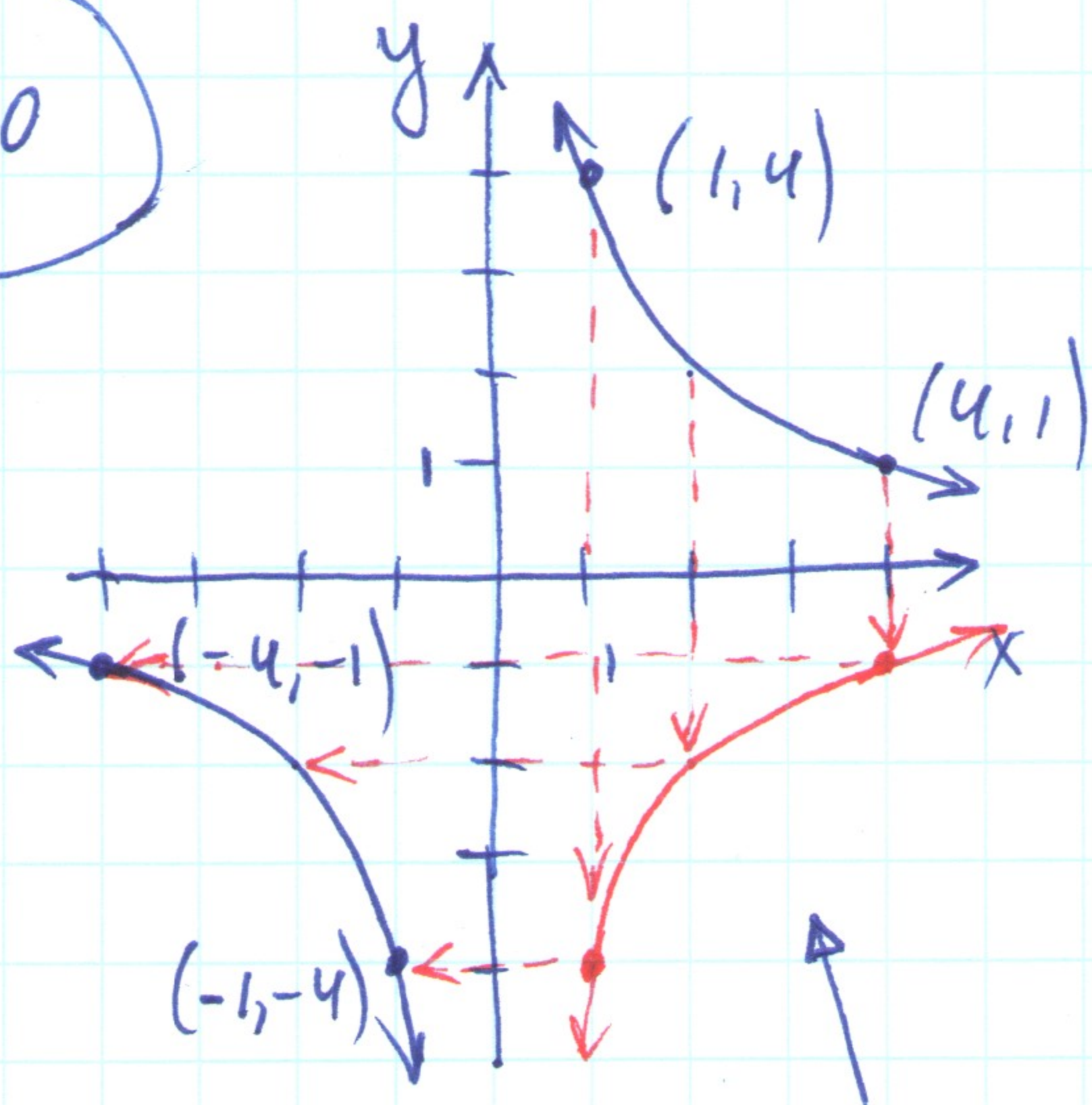


#30

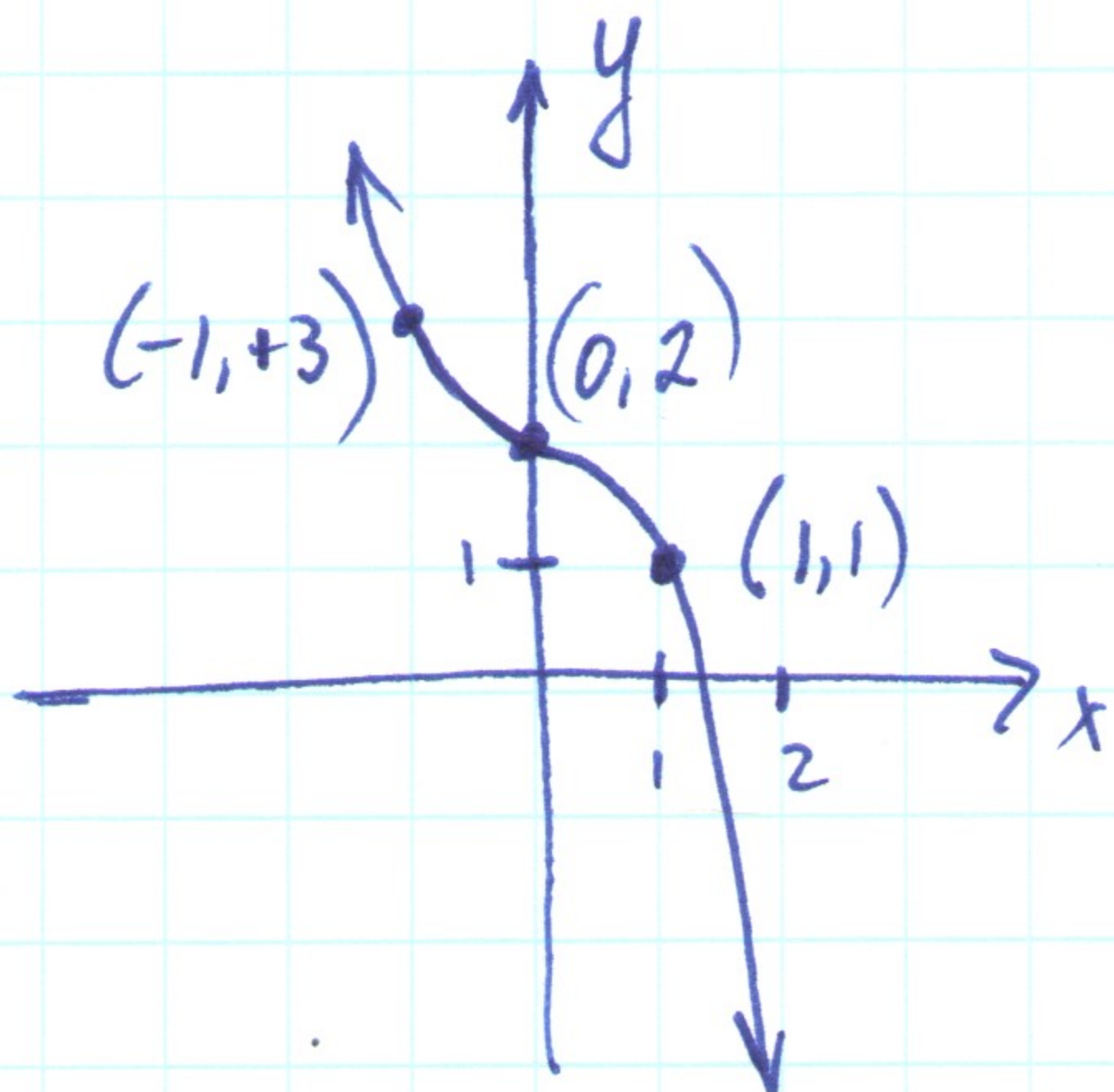


- 1) point $(1, 4)$ is reflected to point $(-1, -4)$
 point $(4, 1)$ is reflected to point $(-4, -1)$
 so it's like $f(-x) = -f(x)$

2) see vertical flip, followed by horizontal flip.

Answer: it is the graph of an odd function

#32



- 1) point $(-1, 3)$ is reflected to:
- $(1, -3)$ for odd function
 - $(1, 3)$ for even function
 - none present

same we will get for $(0, 2)$ and $(1, 1)$

The answer is neither.

#