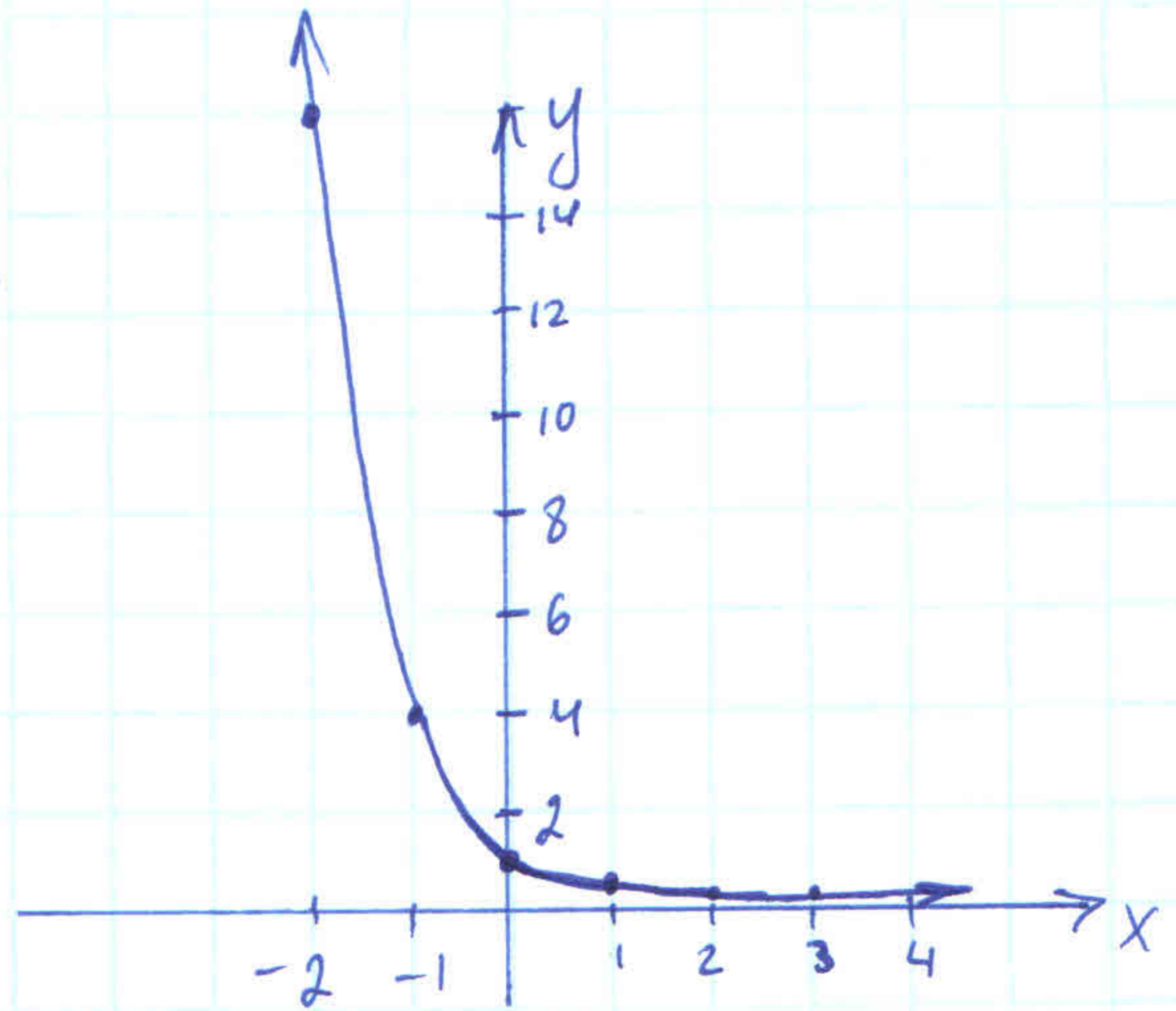


pp. 364/14, 18

N14

plot the graph of  $y = 0.25^x$

x	-2	-1	0	1	2	3	4
y	$\frac{1}{0.25^2}$ $\approx 16$	$\frac{1}{0.25}$ $= 4$	1	0.25	$\approx 0.06$	$\approx 0.02$	$\approx 0.004$



N18

plot the graph of  $y = 2e^x$

x	y
-2	$2 \cdot e^{-2} = \frac{2}{e^2} \approx 0.14$
-1	$2 \cdot e^{-1} = 2/e \approx 0.74$
0	$2 \cdot e^0 = 2 \cdot 1 = 2$
1	$2 \cdot e \approx 5.4$
2	$2 \cdot e^2 \approx 14.8$

