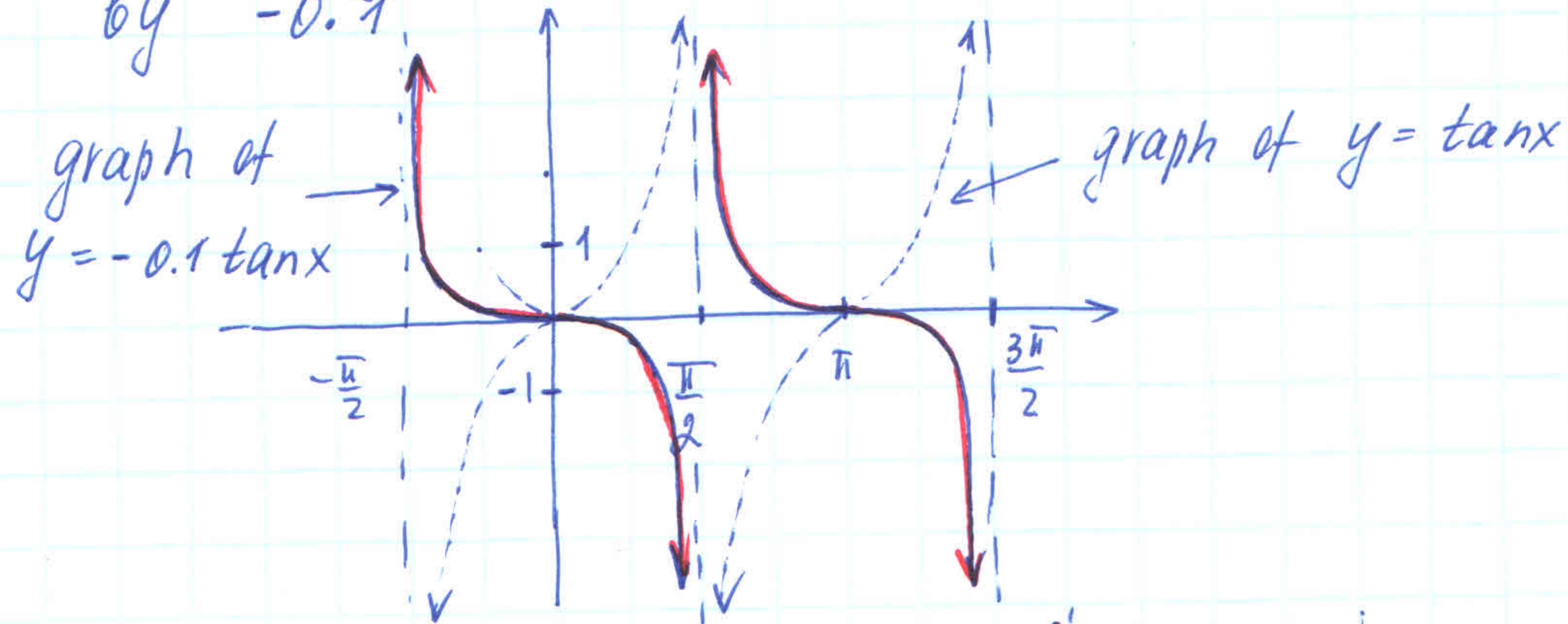


p. 301 | 12, 14.

N12

$$y = -0.1 \tan x$$

- take the graph of $y = \tan x$, multiply each y -coordinate by -0.1



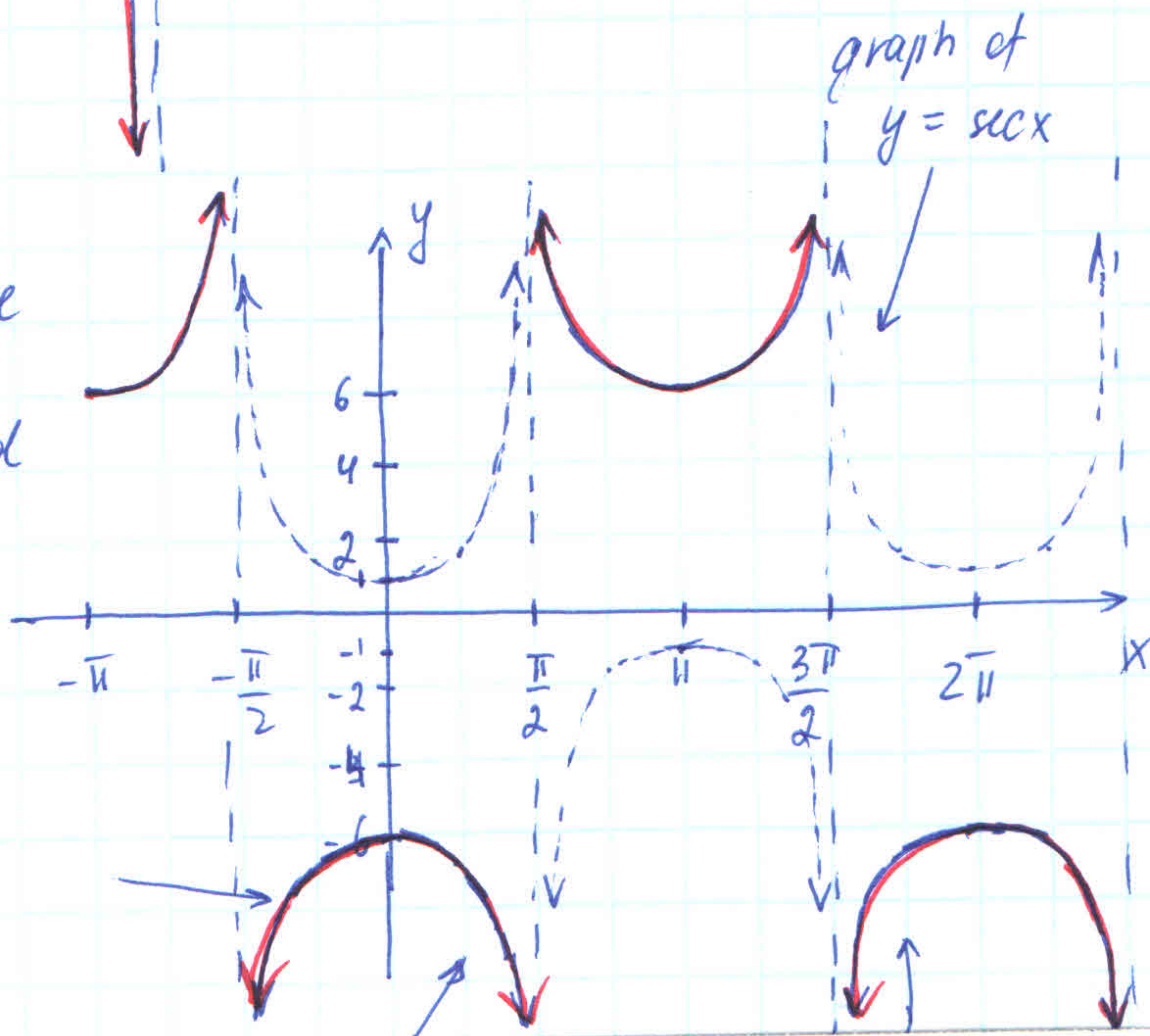
N14

$$y = -6 \sec x$$

- take

the graph of $y = \sec x$, and multiply y -coordinate of each point by -6 .

graph of $y = -6 \sec x$



N16

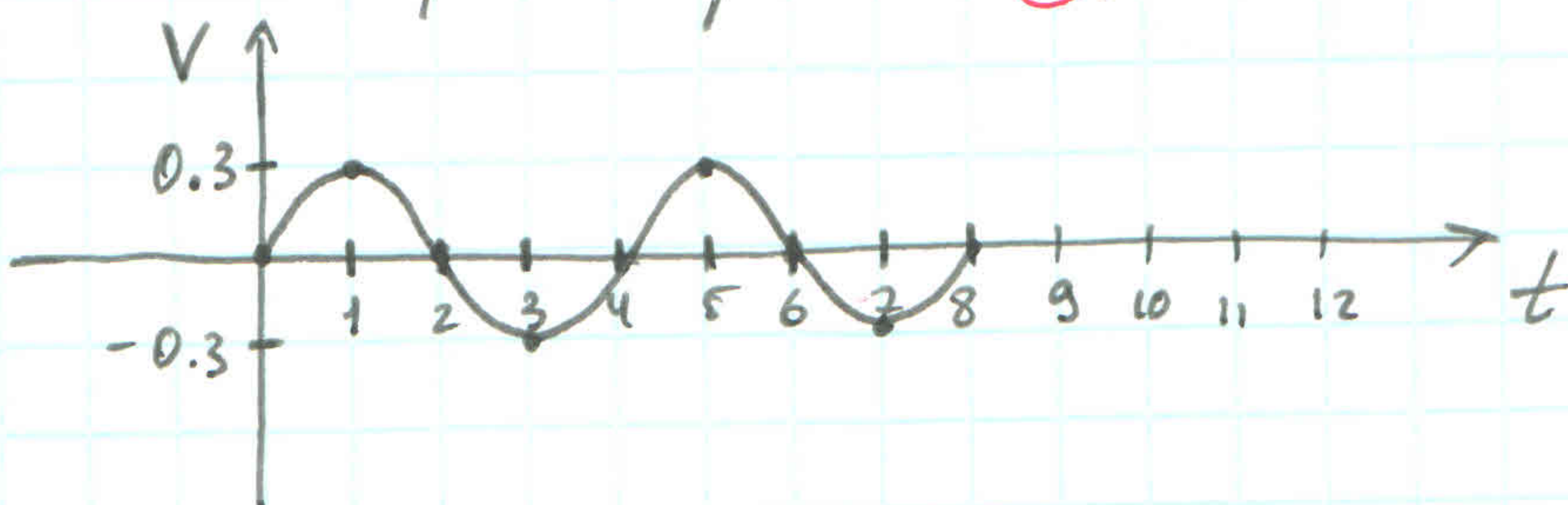
$$V = 0.30 \sin 0.50\pi t. \quad \text{Sketch two cycles.}$$

Solution:

$$\text{period} = \frac{2\pi}{0.50\pi} = 4.$$

$$\text{amplitude} = 0.30.$$

5 most important points: 0 , $\frac{p}{4} = 1$, $\frac{p}{2} = 2$, $\frac{3p}{4} = \frac{3 \cdot 4}{4} = 3$, $p = 4$



two cycles
sketched.